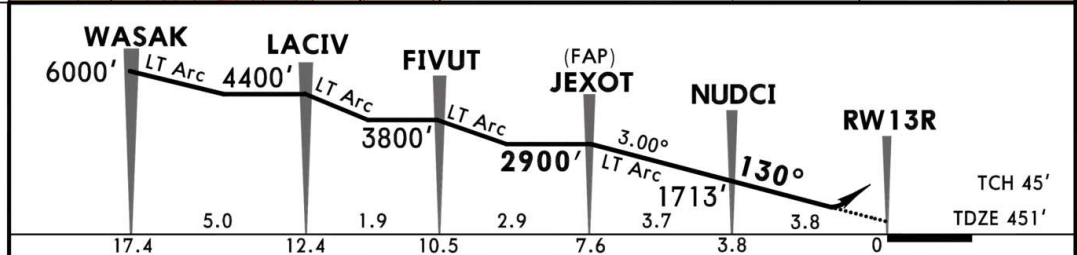
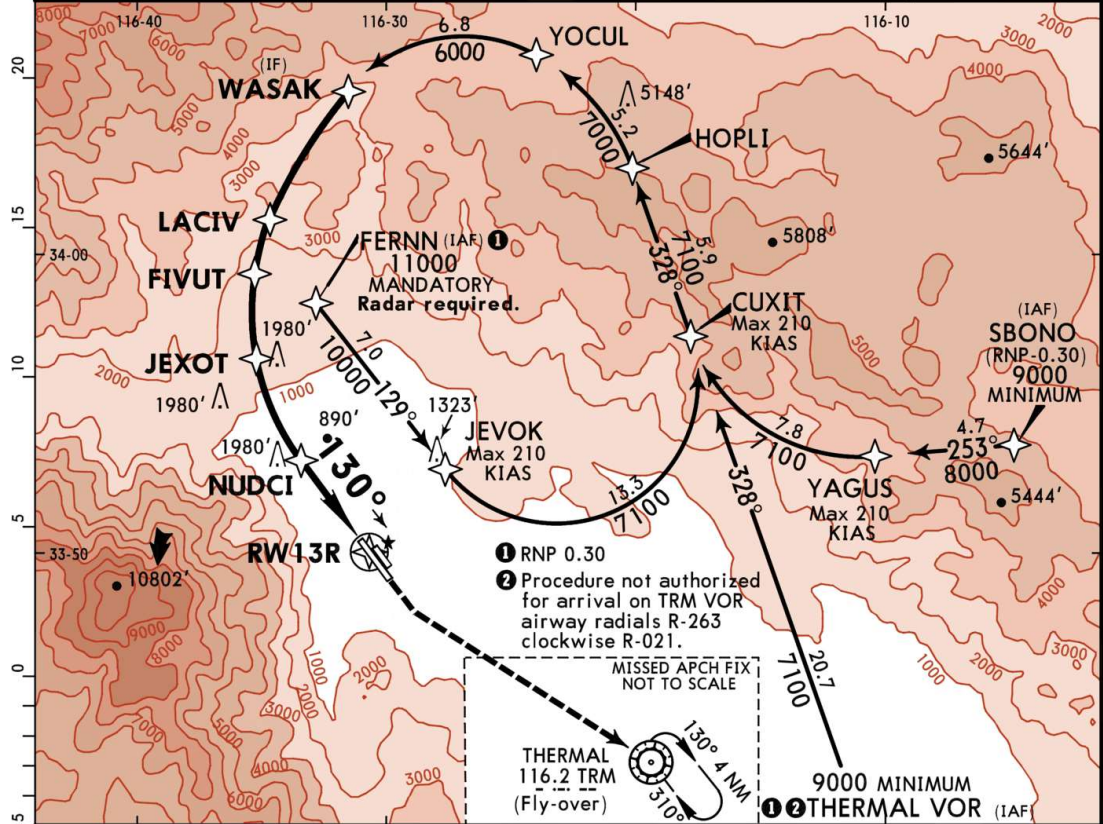


# KPSP/PSP PALM SPRINGS INTL

10 JAN 20 **12-20**

# PALM SPRINGS, CALIF RNAV (RNP) Z Rwy 13R

BRIEFING STRIP™	ATIS (ASOS when Twr inop)		SOCAL Approach (R) 8000' and below 135.275 9000'-13000' 126.7		*PALM SPRINGS Tower CTAF 119.7	*Ground 121.9
	RNAV	Final Apch Crs 130°	JEXOT 2900' (2449')	RNP 0.17 DA(H) 812' (361')	Apt Elev 476' TDZE 451'	<div>12,700</div> <div>MSA RW13R</div>
	MISSED APCH: Climb to 900' then climbing LEFT turn to 4000' direct TRM VOR and hold.					
	Alt Set: INCHES Trans level: FL 180 Trans alt: 18000'					
	1. AUTHORIZATION REQUIRED. 2. RNP AR Apch, RF required.					
	3. For uncompensated Baro-VNAV systems, procedure not authorized below 1°C or above 54°C. 4. VGSi and descent angles not coincident (VGSi angle 3.00°/TCH 47').					
5. Pilot controlled lighting 119.7.						



Gnd speed-Kts	70	90	100	120	140	160	REIL PAPI-L	900' ↑	4000' LT ↙	D →	TRM 116.2
Glide Path Angle 3.00°	372	478	531	637	743	849					
MAP at DA											

TERPS		STRAIGHT-IN LANDING RWY 13R	
		RNP 0.17 DA(H) <b>812'</b> (361')	RNP 0.30 DA(H) <b>882'</b> (431')
A		1¼	1½
B			
C			
D			

Chart linked to Navigraph account reyraymon